



MONTHLY MEMBERSHIP PROGRESS REPORT

District 315B2

Results as of: 03/31/2019

GMT: SWADESH RANJAN SAHA

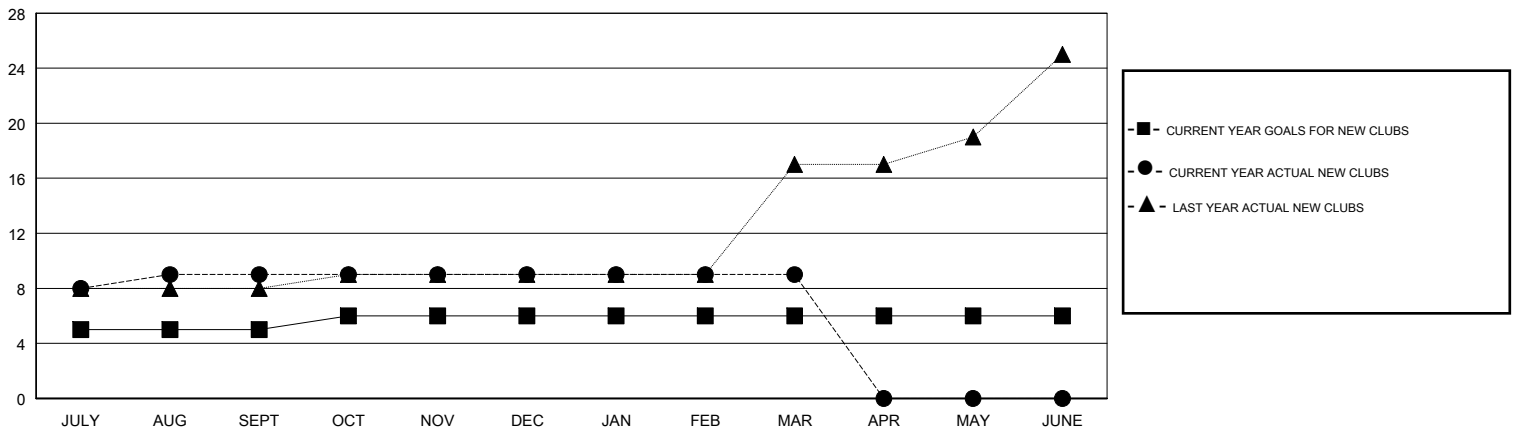
LOCATION REP OF BANGLADESH

GMT CA

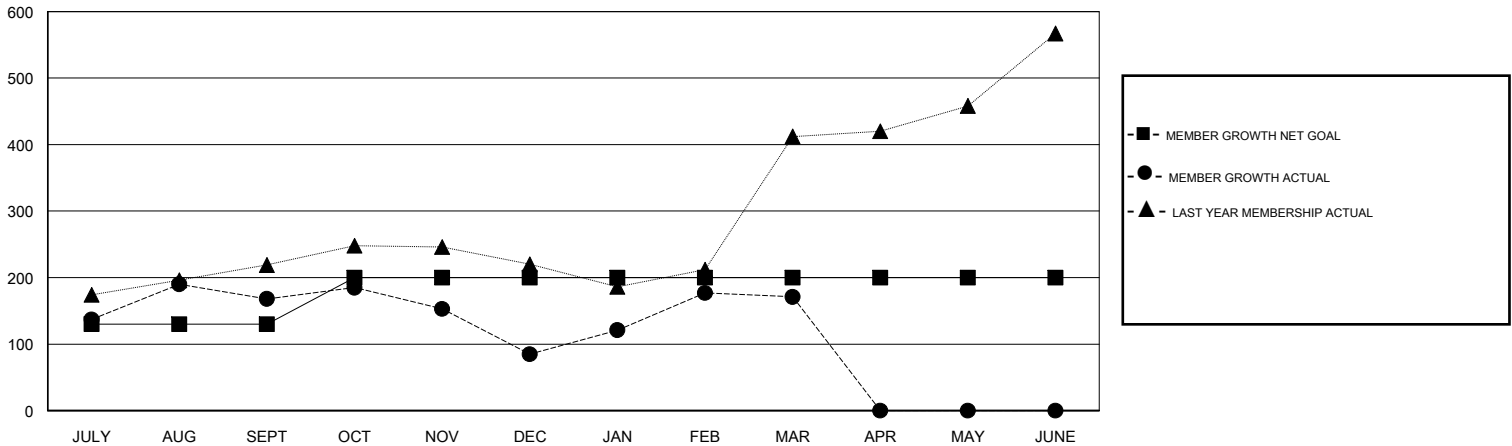
Clubs			
RESULTS FOR 2018-2019			
QUARTER	NEW CLUB GOAL	NEW CLUBS	DROPPED CLUBS
JULY/AUG/SEPT	5	9	2
OCT/NOV/DEC	1	0	3
JAN/FEB/MAR	0	0	1
APR/MAY/JUNE	0	0	0

Members			
RESULTS FOR 2018-2019			
QUARTER	MEMBER GROWTH NET GOAL	MEMBER GROWTH ACTUAL	DROPPED MEMBERS ACTUAL (including transfers)
JULY/AUG/SEPT	130	263	93
OCT/NOV/DEC	70	31	114
JAN/FEB/MAR	0	113	24
APR/MAY/JUNE	0	0	0

GOALS AND ACTUAL NEW CLUBS CUMULATIVE



GOALS AND ACTUAL MEMBERS CUMULATIVE



DROPPED CLUBS: 6	57 CLUBS OF 98 ADDED 1 OR MORE NEW MEMBERS	<u>GENDER DISTRIBUTION</u>	
DROPPED MEMBERS		MALE	1,926 (78.90%)
DECEASED	5	FEMALE	515 (21.10%)
CLUB CANCELLED	143	Women Percentage Fiscal Year Goal: 30%	
OTHER	83	TOTAL FAMILY UNIT MEMBERS	784
TOTAL	231	FAMILY MEMBERS PAYING HALF DUES	495

[CLICK HERE FOR CUMULATIVE MEMBERSHIP DATA](#)